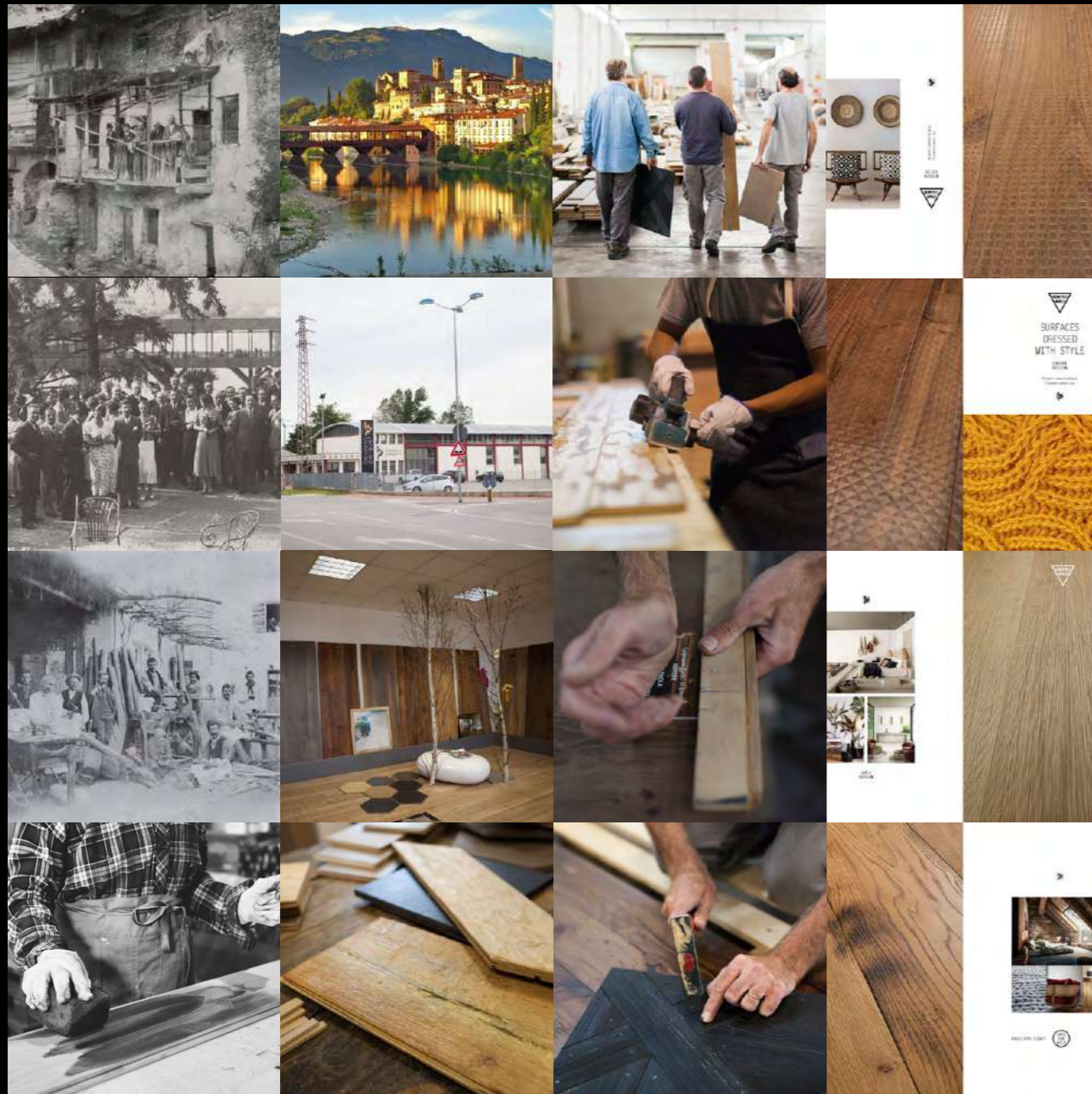




# The Catalogue

IL CATALOGO

IL LEGNO, LA NOSTRA STORIA DAL 1832  
WOOD, OUR HISTORY SINCE 1832



[IT]

Sono sufficienti solo queste parole per parlare di noi, della nostra grande passione per il legno tramandata da così tante generazioni. La nostra storia affonda le proprie radici nell'esperienza di oltre 150 anni in questo settore, ma non è con il legname che l'avventura inizia, bensì con i manici di frusta ricavati dal "bagolaro" albero particolarmente elastico e di grande durata e crescita spontanea in terreni rocciosi. È dal Trentino, infatti, regione montuosa per eccellenza che trae origine la famiglia Andreatti. Dai manici di frusta l'attività si è andata via via ingrandendo sino ad arrivare nel primo dopoguerra (1920) a comprendere due segherie di resinosi importando tronchi di abete e larice da tutta Europa. è Bassano del Grappa la sede di questa importante realtà che espande la gamma di prodotti trattati includendo essenze pregiate di latifoglia come rovere, noce e ciliegio. La crisi del mobile ha fatto sì che 15 anni fa abbiamo deciso di affiancare la produzione e commercializzazione di segati con quella di pavimenti prefiniti, attività che è diventata il nostro "core business". La trasformazione è iniziata in modo ambizioso e con la grande volontà di "rimettersi in gioco" investendo in nuove tecnologie e scelta di materiali più adatti per offrire un prodotto di massima qualità tecnica ed estetica. La carica innovativa affiancata alla fondamentale componente di manualità artigianale nei processi di lavorazione e finitura e la flessibilità produttiva sono i nostri punti di forza che ci permettono di essere apprezzati in tutto il mondo e sono questi gli ingredienti per creare progetti unici ed inconfondibili. Bassano Parquet presenta oggi un catalogo ricco di oltre 16 essenze che impreziosiscono le nostre collezioni nelle finiture più esclusive, verniciate, oliate, spazzolate, piallate a mano e termotrattate.

[EN]

We would like to spare just a few words to speak about our company, our great passion for wood that has been handed down through so many generations. Our deeply-rooted history consists of more than 150 years of experience in this sector, yet this adventure did not begin with timber, but with the whip handles made from "huckberry", a particularly elastic and long-lasting tree that grows spontaneously on rocky land. In fact, it is from Trentino, the mountainous region par excellence that the Andreatti family originates. Our company activities which started with whip handles gradually continued to expand until the post-war period (1920) to include also two resinous wood sawmills that imported spruce and larch trunks from all over Europe. The head office of this important enterprise that has broadened its range of treated products to include precious types of hardwood such as oak, walnut and cherry is situated in Bassano del Grappa. 15 years ago, the furniture crisis made us combine the production and the marketing of sawnwood with that of pre-finished flooring and this latter activity has become our "core business". Our company transformation started in an ambitious way and together with the great willingness to "put ourselves on the line" by investing in new technologies and choosing more suitable materials in order to offer a product that is of the utmost technical and aesthetic quality. The motivation towards innovation blended with the fundamental element of the manual dexterity of the craftsmen during the processing and finishing stages as well as our productive flexibility are our strong points that allow us to be appreciated worldwide and these are the ingredients needed in order to create unique and unmistakable projects. Today, Bassano Parquet presents a rich catalogue with 16 types of wood that enhance our collections with the most exclusive painted, oiled, brushed, hand-scraped and heat-treated finishes.



L'UOMO E L'AMBIENTE SOPRATTUTTO  
MOST IMPORTANTLY, MAN AND THE ENVIRONMENT

[IT]

Le nostre scelte convergono in una sola direzione:  
QUALITÀ TOTALE.

100% Made in Italy: BP può certificare i suoi prodotti marchiati CE ,in classe ignifuga \*BFLS1 , \*FSC e \*PEFC.

Energia pulita generata e utilizzata da BP grazie ai 5000 m2 di superficie di 913 pannelli (FOTOVOLTAICI) di silicio amorfo per 270 Kwp di potenza complessiva.

Formaldeide e pentaclorofenolo: l'utilizzo di colla classe D3/D4 priva di formaldeide garantisce la totale salubrità degli ambienti interni.

Certificato Carb rilasciato su richiesta.

H2o Colorazioni e verniciature all'acqua a basso impatto ambientale completano un ciclo produttivo all'insegna dell'ecosostenibilità.

Certificato di qualità: accompagna ogni ordine ed include scheda identificativa del prodotto, dichiarazione di prestazione, istruzioni prima della posa. Disponibile anche un kit di prodotti per la pulizia e manutenzione del parquet acquistato.

\*CERTIFICATI SU RICHIESTA

[EN]

Our choices converge in one direction only:  
TOTAL QUALITY.

100% Made in Italy: BP can certify its CE products in fire proof class \*BFLS1 , \*FSC e \*PEFC.

Energia pulita is created and used by BP thanks to the 5000 m2 surface of 913 amorphous silicon panels that produce a total power of 270 Kwp.

Formaldehyde and pentachlorophenol: full respect for health and for the environment is guaranteed by using class D3/D4, formaldehyde-free glue.

Carb certificate on request.

Water based finishes at a low impact on the environment complete our eco-sustainable production cycle.

Quality certificate goes with each order and includes: product identification sheet, performance declaration, instructions before installation. Also available a cleaning and maintenance kit.

\*CERTIFICATES ON REQUEST





**SCHEDA TECNICA 2/3 STRATI**  
**2/3-LAYER TECHNICAL CARD**

**2 STRATI / 2-LAYERS**

Ideale per posa incollata e ristrutturazione grazie alla possibilità di scelta di uno spessore ridotto (minimo 11 mm). Snervatura del retro per maggiore flessibilità.  
Ideal for a glued installation and for refurbishment since available also in a lowered thickness (minim mm. 11). Enervated bottom layer for a greater flexibility.

Strato nobile 4/6 mm\*  
Top layer 4/6 mm\*  
\*Incollaggio vinilico classe D3/D4  
privo di formaldeide  
\*Vinyl gluing in D3/D4 class  
formaldehyde-free

Supporto multistrato  
fenolico di Betulla  
Phenolic support  
Birch multilayer



**TAVOLATO / WIDEPLANK**  
Spessore/Thickness: 16/19 mm  
Largh./Widths: da/from 150 a/to 370 mm  
Lungh./Length: da/from 1200 a/to 3000 mm

**MAXILISTONE / MAXIPLANK**  
Spessore/Thickness: 14 mm  
Largh./Widths: da/from 120 a/to 160 mm  
Lungh./Length: da/from 700 a/to 1800 mm

**LISTONE / PLANK**  
Spessore/Thickness: 11 mm  
Largh./Widths: da/from 100 a/to 145 mm  
Lungh./Length: da/from 600 a/to 1800 mm

**3 STRATI / 3-LAYERS**

Ideale per posa incollata e flottante per una straordinaria stabilità e durabilità nel tempo. Snervatura del retro per maggiore flessibilità.  
Ideal for a glued and floated installation thanks to its special steadiness and durability on time. Enervated bottom layer for a greater flexibility.

Strato nobile 4/6 mm\*  
Top layer 4/6 mm\*  
\*Incollaggio vinilico classe D3/D4  
privo di formaldeide  
\*Vinyl gluing in D3/D4 class  
formaldehyde-free

Supporto multistrato  
fenolico di Betulla  
Phenolic support  
Birch multilayer



Controplacco Rovere  
Bottom layer Oak

**TAVOLATO / WIDEPLANK**  
Spessore/Thickness: 15/20 mm  
Largh./Widths: da/from 150 a/to 370 mm  
Lungh./Length: da/from 1200 a/to 3000 mm

**ACCESSORI**  
**ACCESSORIES**

**SCALE / STAIRS**

Gradini costruiti in multistrato e in massiccio con spessore e formati su misura / Solid or engineered stairs in customized thickness and format.



**TORO MASSELLO**, realizzato artigianalmente, disponibile in tre diversi formati e in tutte le essenze a listino.  
**SOLID NOSING**, hand made in our workshop, available in three different formats and in all species in list.

**ACCESSORI / ACCESSORIES**

**RACCORDI E SCIVOLI** disponibili in tutte le essenze a listino e dimensioni su richiesta.  
**CONNECTIONS AND THRESHOLDS** available in all species in list and sizes on demand.



**BATTISCOPIA IMPIALLACCIATI / VENEERED SKIRTING BOARDS**

Disponibili in varie essenze e colorazioni.  
Available in various essences and colors.



45x13 mm

60x16 mm

70x10 mm

82x10/13 mm

75x13 mm

massiccio/solid



# The Naturals

COLLECTION

All types of wood in their natural shades.







LEGEND

1-16 Smoothed or brushed, unfinished or transparent oiled/varnished



1 - Steamed Acacia



2 - Canadian Hard Maple



3 - European Chestnut



4 - European Cherry



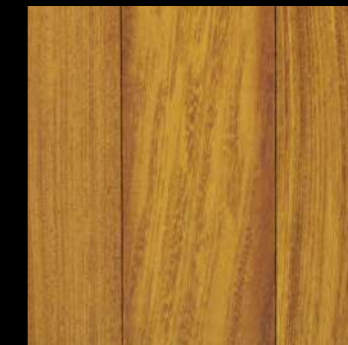
5 - Doussie



6 - Steamed Beech



7 - Ash Two-colours



8 - Iroko



9 - Larch



10 - Mutenye



11 - American Black Walnut



12 - European Walnut





13 - European Elm



14 - European Oak



15 - Asian Teak



16 - Wenge





OILED OAK - WENGE



-015

ASIAN TEAK



Bassano Parquet



# Oak Roots

## COLLECTION

Oak comes in all different shades of colors: from light grey to absolute black, from natural to rustic old looking.







1 - Oak Arenisca



2 - Oak Calizia



3 - Oak Corda



4 - Oak Effetto Grezzo



5 - Oak Ginestra



6 - Oak Lava



7 - Oak Pervinca



8 - Oak Tortora



9 - Oak Villa Arianna



10 - Oak Villa Laura



11 - Oak Villa Marta



12 - Oak Villa Paola

LEGEND

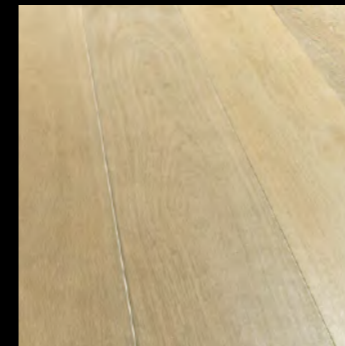
- 1 - Brushed, wenge stained, varnished
- 2 - Brushed, grey stained, varnished
- 3 - Brushed, rope stained, varnished
- 4 - Brushed, raw effect varnished
- 5 - Brushed, grey stained, varnished
- 6 - Brushed, hand planed, stained, decapé, varnished
- 7 - Brushed, grey stained, white decapé, varnished
- 8 - Brushed, grey stained, varnished
- 9 - Hand planed, brushed, stained, varnished, waxed
- 10 - Brushed, stained, varnished
- 11 - Hand planed, brushed, grey stained, varnished
- 12 - Brushed, grey stained, varnished





LEGEND

- 13 - Smooth, stained, varnished
- 14 - Gentle handplaned, brushed, stained, varnished
- 15 - Brushed, stained, varnished



13. Oak Sky



14. Oak Bristol



15. Oak Trasparenza







OAK VILLA ARIANNA



OAK GINESTRA



# London Line

## COLLECTION

British style is the inspiration for these special wideplanks, rich in shades: from lighter greys to darker.

## LEGEND

1-4 Brushed, stained, varnished







OAK SOHO



OAK CAMBRIDGE



OAK CAMBRIDGE



1 - Oak Cambridge



2 - Oak Oxford



3 - Oak Soho



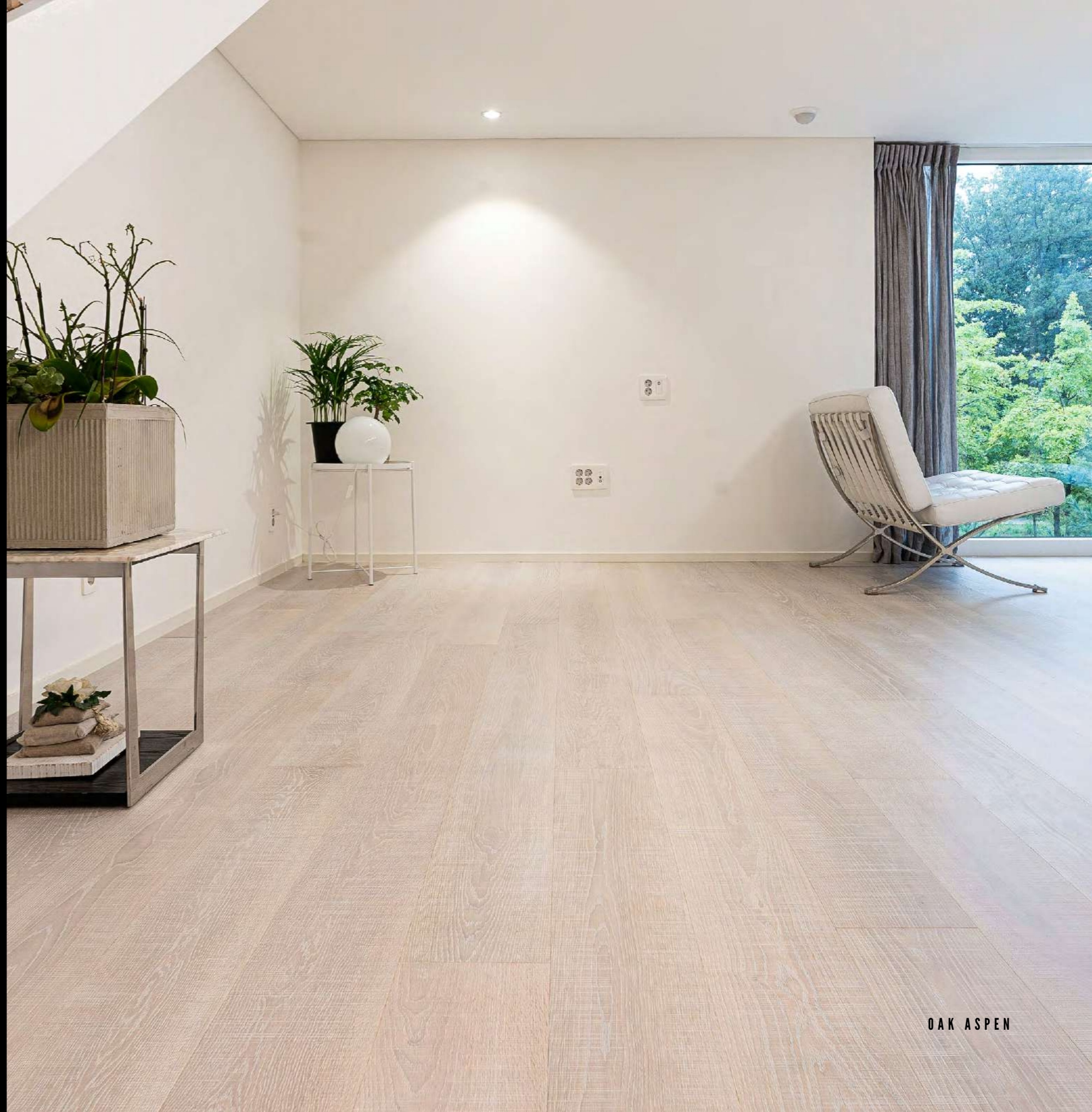
4 - Oak Liverpool



# Whitened Oaks

COLLECTION

From naturals to decapé up to aged whites.  
For those who love elegant spaces,  
full of light, style and design.







OAK 34LVCS

**LEGEND**

- 1 - Brushed, whitened, varnished
- 2 - Brushed, neutral natural varnished
- 3 - Brushed, decapé, varnished
- 4 - Brushed, saw cut, whitened, varnished, decapé
- 5 - Brushed, soft whitened, varnished
- 6 - Brushed, whitened, matt varnished



1 - Oak 30TVSB



2 - Oak 34LVCS



3 - Oak 36LVDS



4 - Oak Aspen



5 - Oak Cayman



6 - Oak Chic Davos



# Bassano 1832

## COLLECTION

A unique collection of distressed old looking floors.  
Colours are obtained by using stained oils and working  
with the natural reaction of the wood.



EUROPEAN WALNUT (HAND PLANED, WATER BASED VARNISHED AND WAXED)





1 - European Acacia



2 - European Elm



3 - Oak Terre del Passato



4 - Oak Terre Venete



5 - European Walnut



6 - Oak Burned Dark

LEGEND

- 1 - Brushed, hand planed, distressed bevel, treated with natural soils, oiled
- 2 - Brushed, treated with natural soils, oiled, hand planed
- 3 - Iron brushed, antique, grey stained, oiled, hand planed, distressed bevel
- 4 - Iron brushed, antique, oiled, hand planed, distressed bevel
- 5 - Hand planed, brushed, natural varnished and waxed
- 6 - Iron brushed, hand planed, distressed bevel, burned, oiled
- 7 - Brushed, light grey stained, varnished
- 8 - Brushed, grey stained, varnished



7 - Chestnut Rumba



8 - Chestnut Salsa



*Chestnut, long-lived and austere plant, “gives” us a noble and precious wood with a texture capable of creating unique effects.*

---

*Il Castagno, pianta longeva e austera, ci “regala” un legno nobile e pregiato con una fibra capace di creare effetti unici.*





# Opera Prima

COLLECTION

The pride and joy of Bassano Parquet, a compendium of our  
handicraft expertise. Available in all the finishes in our catalogue  
or according to clients' request.







1 - Oak Buenos Aires



2 - Oak Effetto Calce



3 - Oak Effetto Decking



4 - Oak Trasparenza



5 - Oak Effetto Miele



6 - Oak Effetto Storico



7 - Oak Liverpool

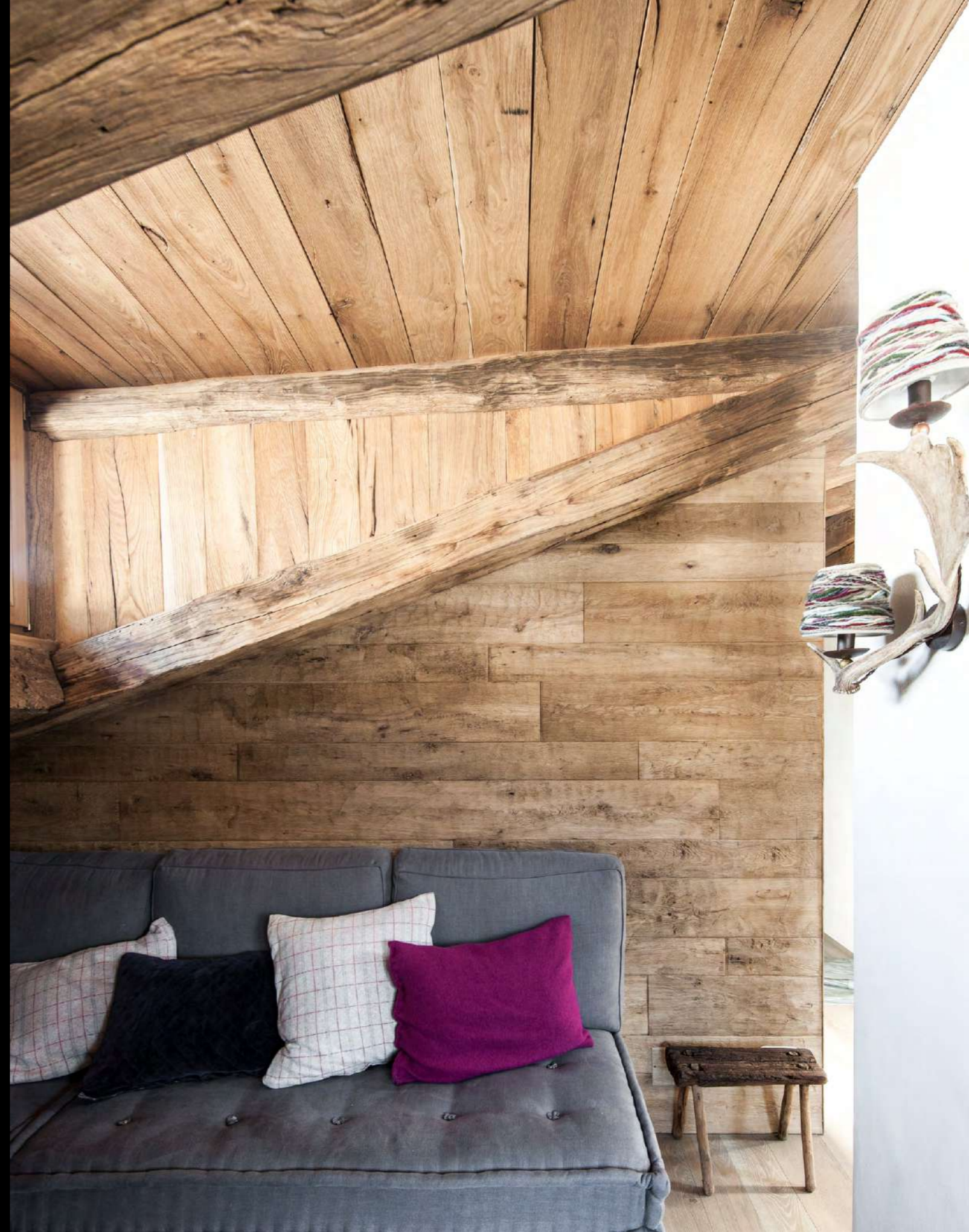


8 - Oak Manchester

### LEGEND

- 1 - Hand planed, brushed, antique like, varnished, waxed
- 2 - Hand planed, brushed, lime stained, varnished, waxed
- 3 - Hand planed, brushed, grey stained, varnished and waxed
- 4 - Hand planed, brushed, raw effect varnished, waxed
- 5 - Hand planed, brushed, honey stained, varnished, waxed
- 6 - Hand planed, brushed, antique like, varnished, waxed
- 7 - Hand planed, brushed, antique like, varnished, waxed
- 8 - Hand planed, brushed, dark grey antique like, varnished, waxed











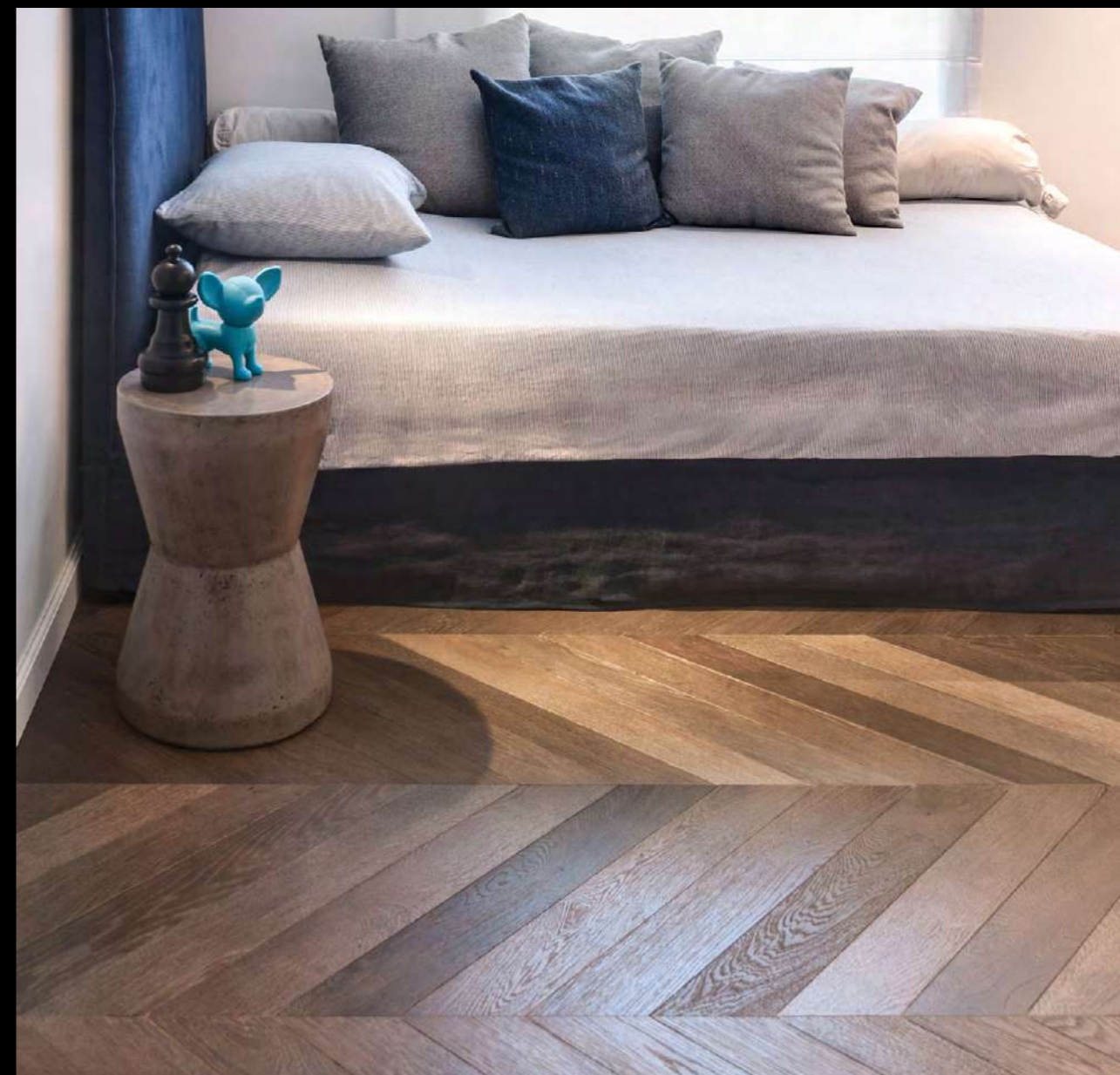
# Oak Thermo

## COLLECTION

Characteristics of "Thermo" are: the steadiness and the full thickness uniform colour.

## LEGEND

- 1 - Brushed, water based varnished transparent
- 2 - Brushed, stained and water based varnished
- 3 - Brushed, water based varnished transparent



1 - Oak Titanio



2 - Oak Corten



3 - Chestnut Mambo



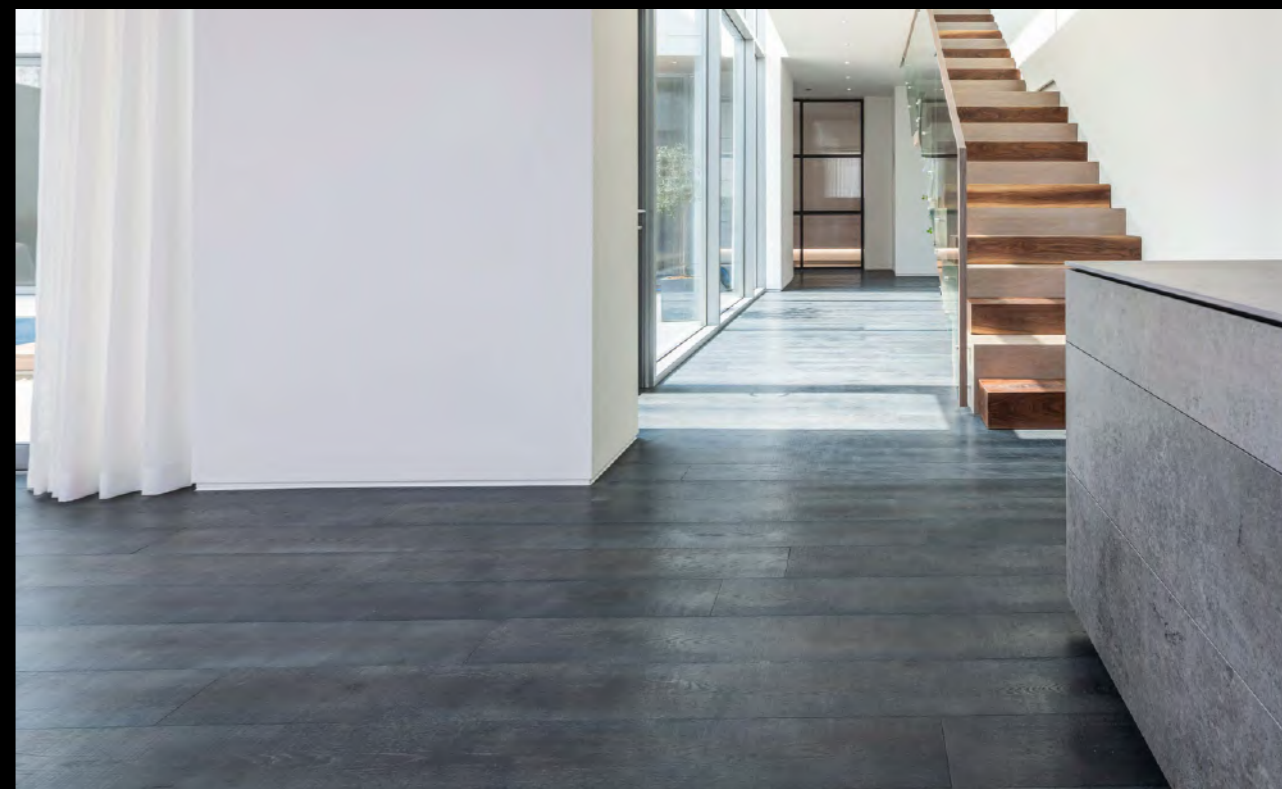
# Archisound

## COLLECTION

Gold, silver and denim decapé made with shiny varnish go perfectly with the most fashion trends. Created for exclusive environments.

## LEGEND

- 1 - Brushed, raw effect varnished
- 2 - Brushed, saw cut, antique-like, denim patined, varnished
- 3 - Brushed, silver coated, varnished
- 4 - Brushed, 60 gloss varnished
- 5 - Brushed, whitened, oiled



1 - Ash Two-colours



2 - Oak Jeans



3 - Oak Polka



4 - Oak Super Glossy Black



5 - European Walnut Mandorla



# Cakes

## COLLECTION

Brushed, varnished, oiled and stained.

Characteristic of the collection is the materiality of the product.

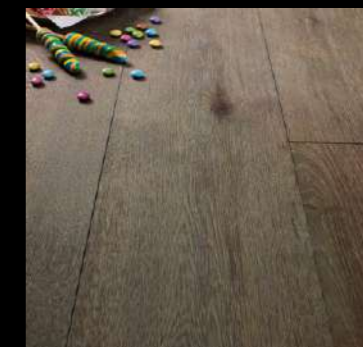
Warm colors and crumbly like cookies.







1 - Oak Brown



2 - Oak Blueberry



3 - Oak Berlin

**LEGEND**

- 1 - Brushed, stained, oiled
- 2 - Brushed, stained, oiled
- 3 - Saw cut, brushed, decapé, matt varnished



***“Go With The Flaw”***  
***Because all that is impeccable is easily forgotten and only what is original is unique, and remains imprinted forever.***

---

***“Go With The Flaw”***  
***Perché tutto ciò che è impeccabile è facilmente dimenticabile e solo quello che è originale è unico, e resta impresso per sempre.***





# Shafts of Light

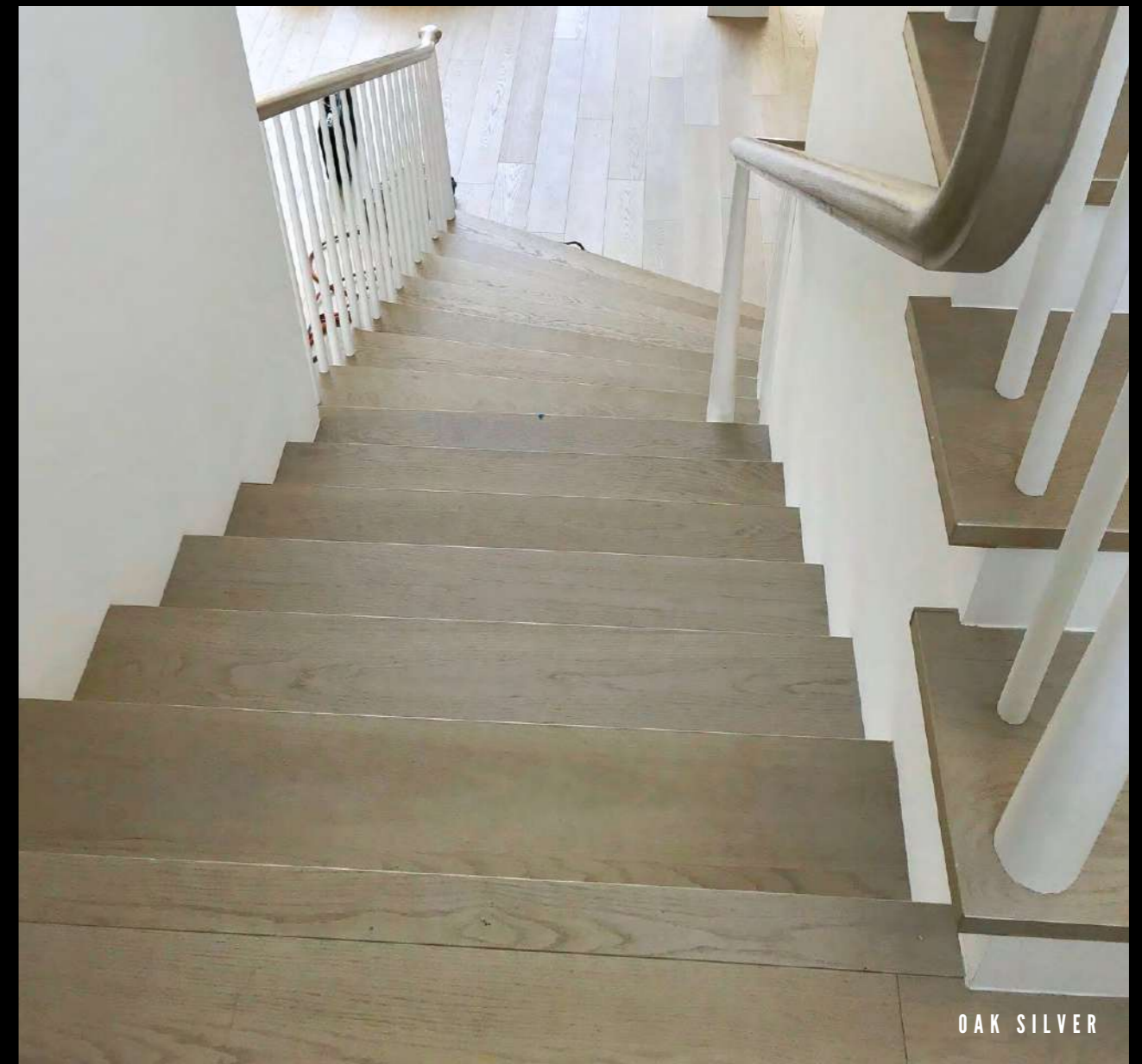
## COLLECTION

A choice of two shiny varnished finishes, silver or gold, will give your environment a delicate elegance with an extremely exclusive product.

## LEGEND

1 - Treated, silver stained, brushed, varnished

2 - Treated, gold stained, brushed, varnished



1 - Oak Silver



2 - Oak Gold



# Monolite

COLLECTION

Varnished aged oak: keywords of our new Monolite collection.







**LEGEND**

- 1 - Aged by time oak, smooth, distressed bevel, painted and varnished
- 2 - Aged by time oak, brushed, varnished, powder painted
- 3 - Aged by time oak, brushed, dark stained and varnished
- 4 - Aged by time, smoothly planed, distressed bevel, stained and varnished



**1 - Oak Ambra**



**2 - Oak Agata**



**3 - Oak Ematite**



**4 - Oak Dalia**





OAK EFFETTO GREZZO (ON REQUEST)



OAK AGATA



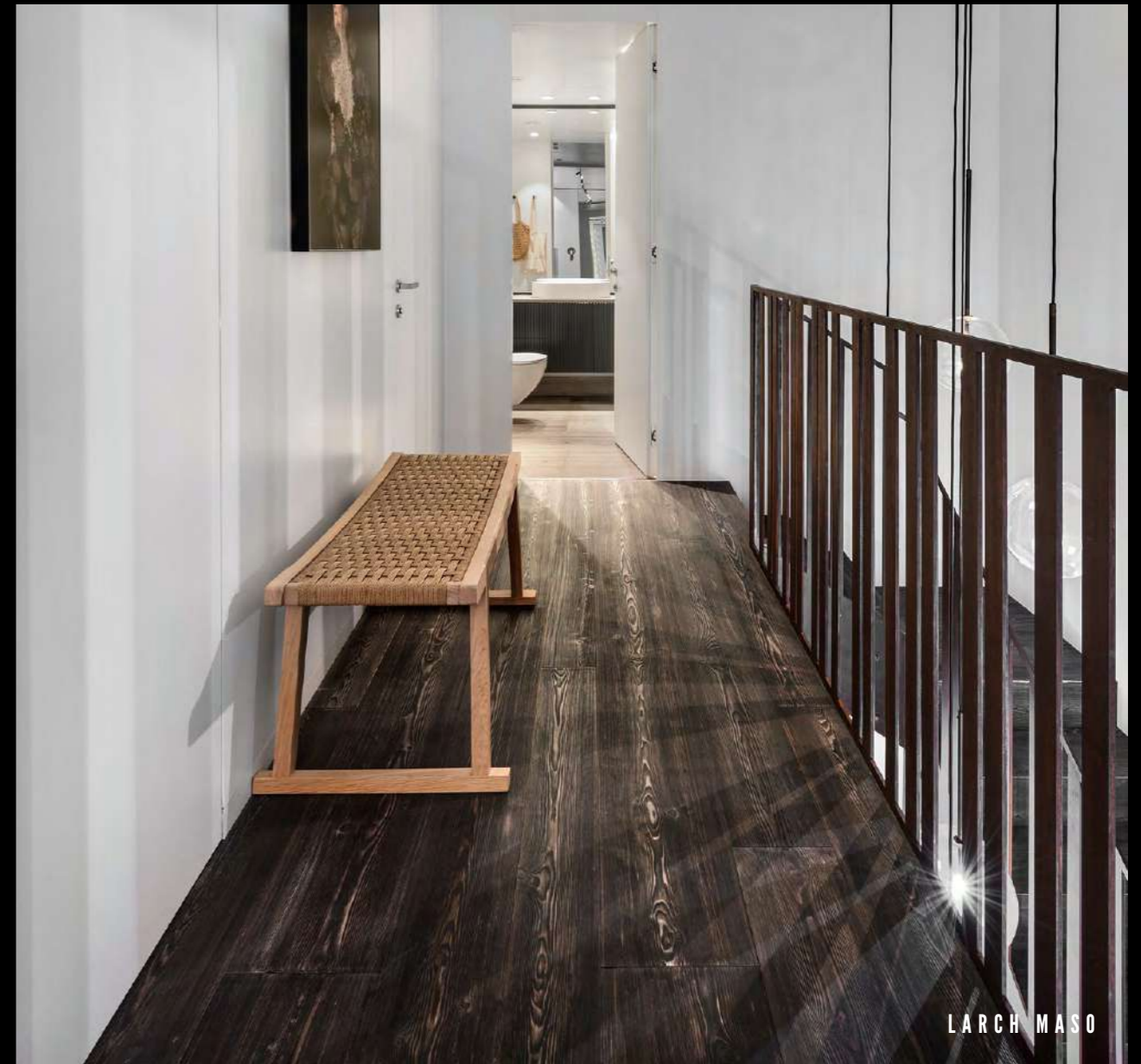
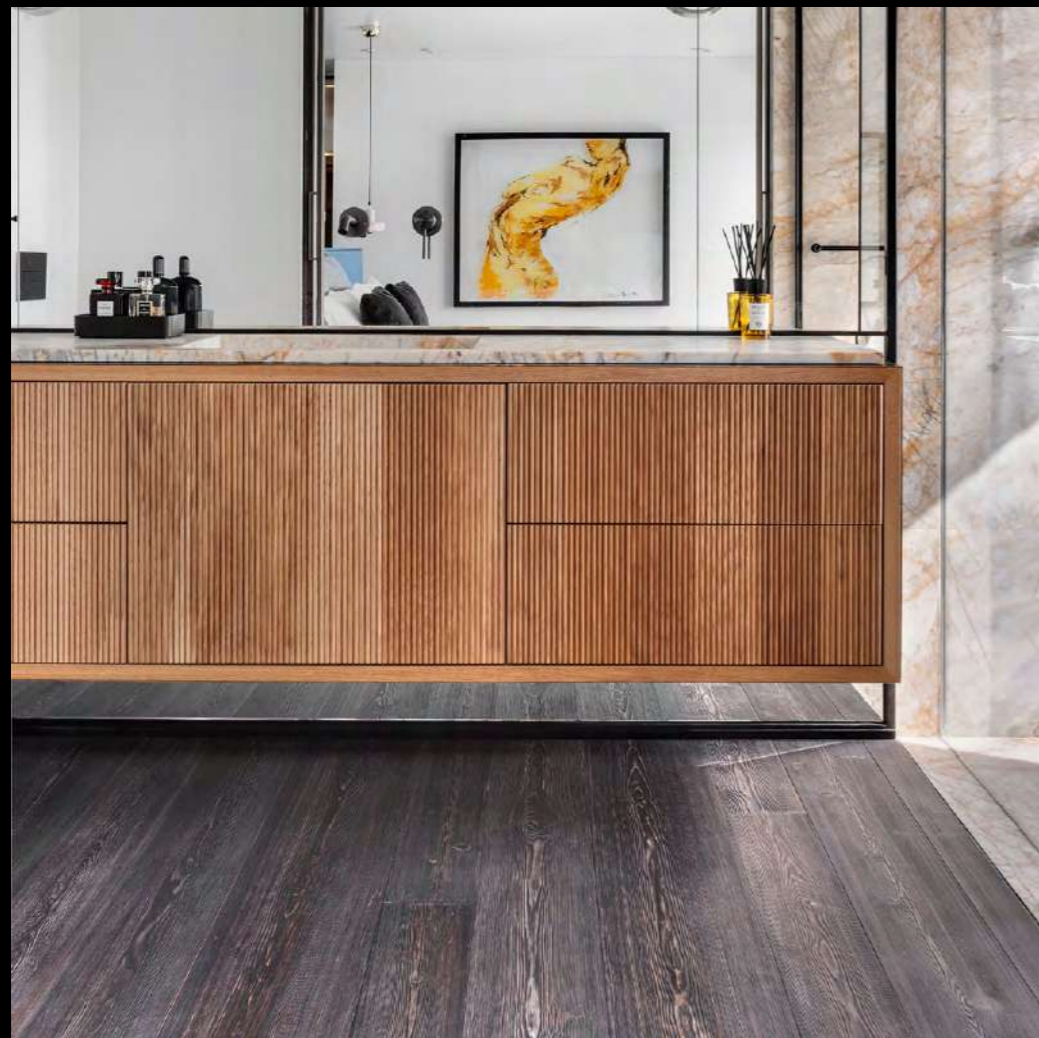
# Pearls of the Forest

## COLLECTION

Observing the larches of this collection, the thought flows to mountain chalets as well as beach resorts.

## LEGEND

- 1 - Brushed, whitened, varnished
- 2 - Brushed, stained light grey, varnished
- 3 - Brushed, stained dark grey, varnished



LARCH MASO



1 - Larch Gstaad



2 - Larch Tabià



3 - Larch Maso



# Sawn and Planed

## COLLECTION

This collection reproduces the most popular finishes of our range. It is enriched by a soft hand planing that wraps the knottiness Oak.

## LEGEND

- 1 - Carved knot planing, irregular bevel, brushed, stained, varnished
- 2 - Carved knot planing, irregular bevel, brushed, saw cut, stained, varnished
- 3 - Carved knot planing, irregular bevel, brushed, stained, varnished



1 - Corbezzolo



2 - Aronia



3 - Agrifoglio



# Pearls

## COLLECTION

Amazing finishes reminding all the shades of tropics.

## LEGEND

- 1 - Brushed, grey stained mother-of-pearl effect and varnished
- 2 - Brushed, white stained mother-of-pearl effect and varnished
- 3 - Brushed, dark stained mother-of-pearl effect and varnished



1 - Oak Akoya



2 - Oak Australia



3 - Oak Tahiti



# Cubic

## COLLECTION

New textures for a 3D immersion in the beauty of wood.

## LEGEND

1 - Varnished walnut

2 - Varnished oak

3 - Varnished thermo-treated oak



1 - Chefren



2 - Juta



3 - Cells



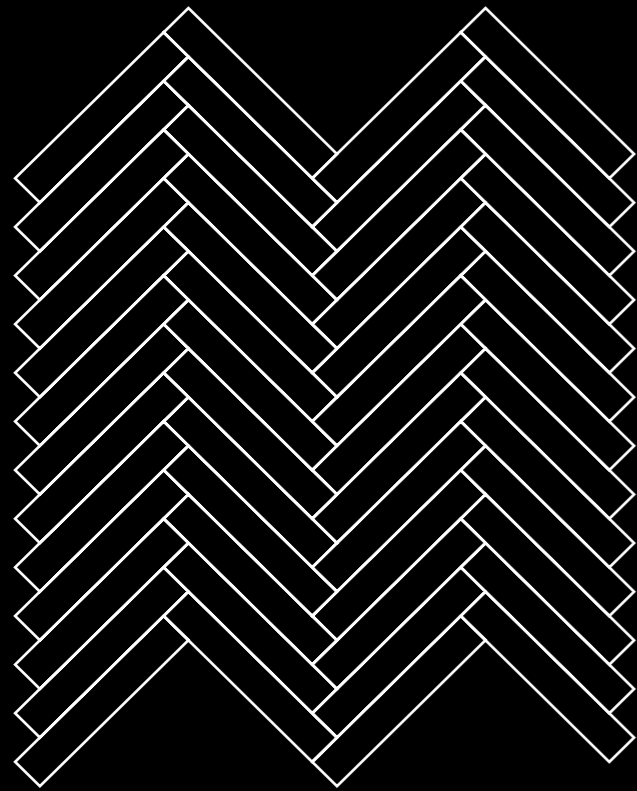
# The Geometries

COLLECTION

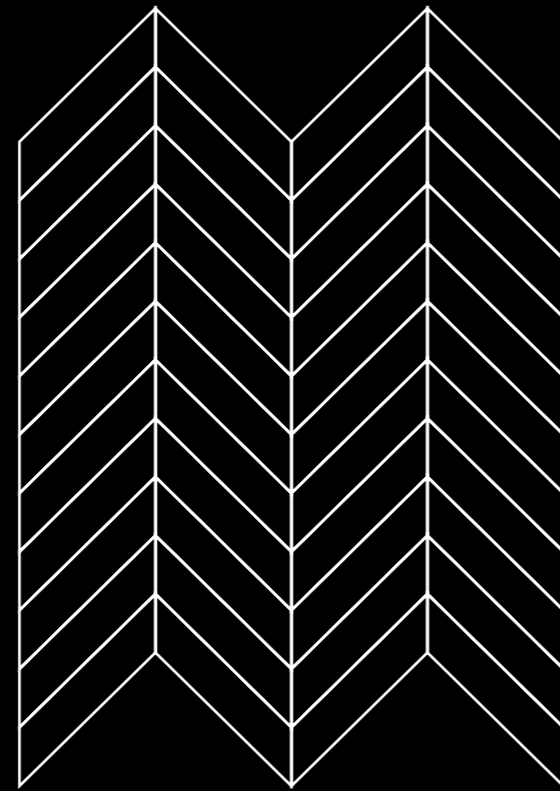
Patterns, herringbone and chevron:  
unlimited imagination, games of species  
and dimensions for any request.







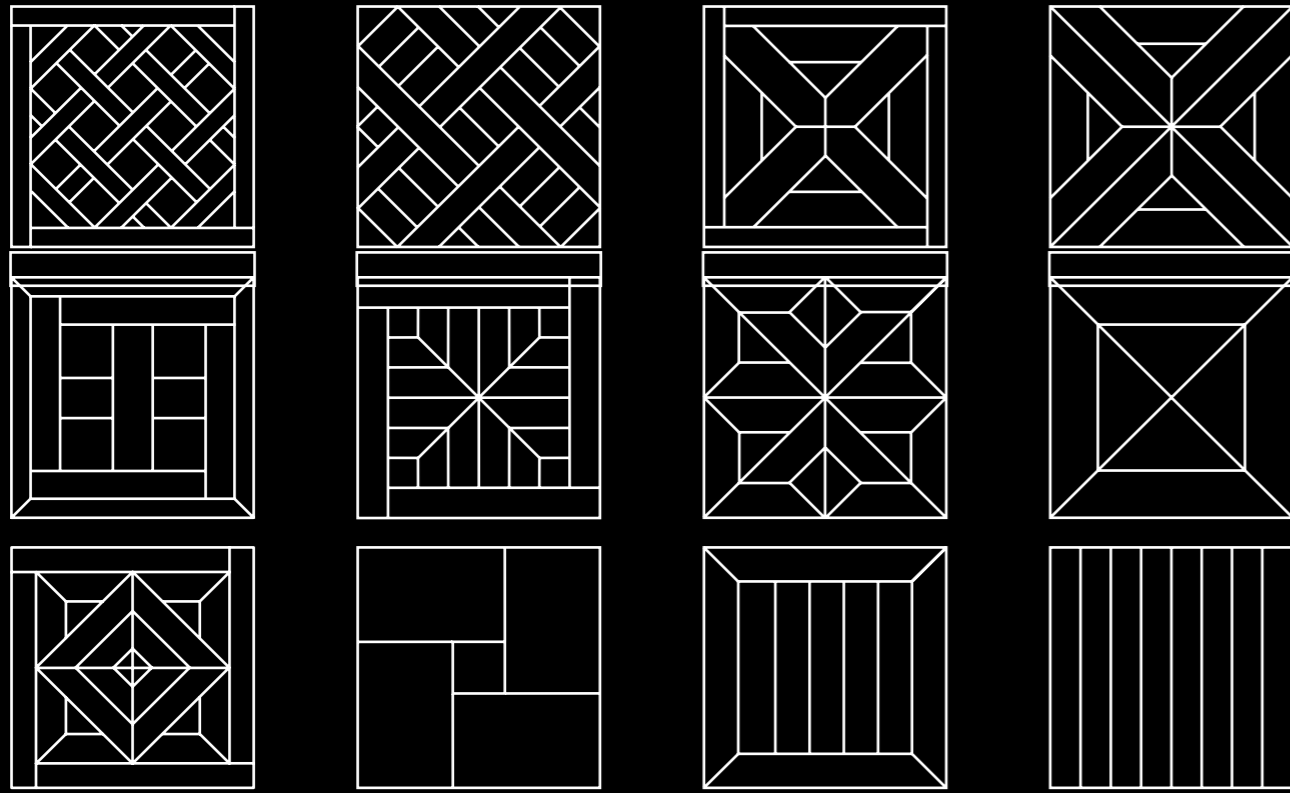
FISH HERRINGBONE 90-DEGREES



HUNGARIAN HERRINGBONE 45/60-DEGREES







PATTERNS (AVAILABLE IN ALL SPECIES AND FINISHES)





# Outdoor Wood Flooring

## COLLECTION

Ideal for houses and public areas, our outdoor flooring is a precious heartwood which is beautiful, safe and resists the signs of time and wear.





**BASSANO PARQUET SRL**

Via T. Speri, 10  
36022, Cassola (VI), Italy  
Tel: +39 0424 220726  
Fax: +39 0424 220942  
Mail: [info@bassanoparquet.com](mailto:info@bassanoparquet.com)  
Web: [www.bassanoparquet.com](http://www.bassanoparquet.com)

Instagram: [@bassanoparquet](https://www.instagram.com/bassanoparquet)  
Facebook: Bassano Parquet  
LinkedIn: Bassano Parquet

**LOCATIONS OF THIS CATALOGUE**

Pag 09 Seoul - Bowling room	Pag 27 Miami (USA)
Pag 10 Italy - Nardini restaurant	Pag 29 Mexico
Pag 12 Kiev	Pag 30 Australia
Pag 12 Puglia (Italy) - Private house	Pag 32 Bulgaria
Pag 13 Tel Aviv - Private house	Pag 34 Skopje
Pag 14 Saint Petersburg - Villa	Pag 36 France - Studio
Pag 15 Italy - Bolle Nardini (Architect: M. Fuksas)	Pag 38 Israel
Pag 15 Israel - Private villa	Pag 45 Germany - Wine bar
Pag 16 Florence (Italy)	Pag 42 Skopje - Private house
Pag 20 Florida (USA) - Private house	Pag 45 Moscow - Restaurant
Pag 21 United Kingdom - Private villa	Pag 46 Lebanon - Shop
Pag 22 South Korea	Pag 52 Italy - Cassina showroom
Pag 23 Cortina d'Ampezzo (Italy) - Chalet	Pag 53 Florida (USA)
Pag 24 Ukraine - Interior design shop	Pag 54 South Africa
Pag 26 South Korea	Pag 77 Dubai - Alici restaurant



[BASSANOPARQUET.COM](http://BASSANOPARQUET.COM)